

TARGET

26,500
vulnerable
women & girls



KIRUNDO

Vumbi, Kirundo

MUYINGA

Gasorwe,

Giteranyi, Muyinga



GITEGA

Bukirasazi, Giheta, Gitega

Why we target women & girls in Burundi?

- Women and girls are excluded from decision-making processes
- Targeting women and girls while engaging men and boys, has a positive impact on the wider community
- Women and girls bear the brunt of the burden of the fragile social and political context

**SHE HAS THE POWER
TO CHANGE HER WORLD.
YOU HAVE THE POWER
TO HELP HER DO IT.**

Our Mission

CARE works around the globe to save lives, defeat poverty and achieve social justice.

Our Vision

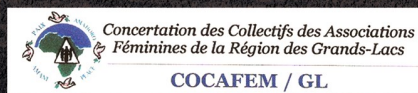
We seek a world of hope, tolerance and social justice, where poverty has been overcome and all people live with dignity and security.

Our Focus

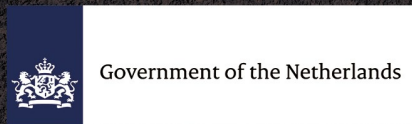
We put women and girls in the center because we know that we cannot overcome poverty until all people have equal rights and opportunities.



Our Partners



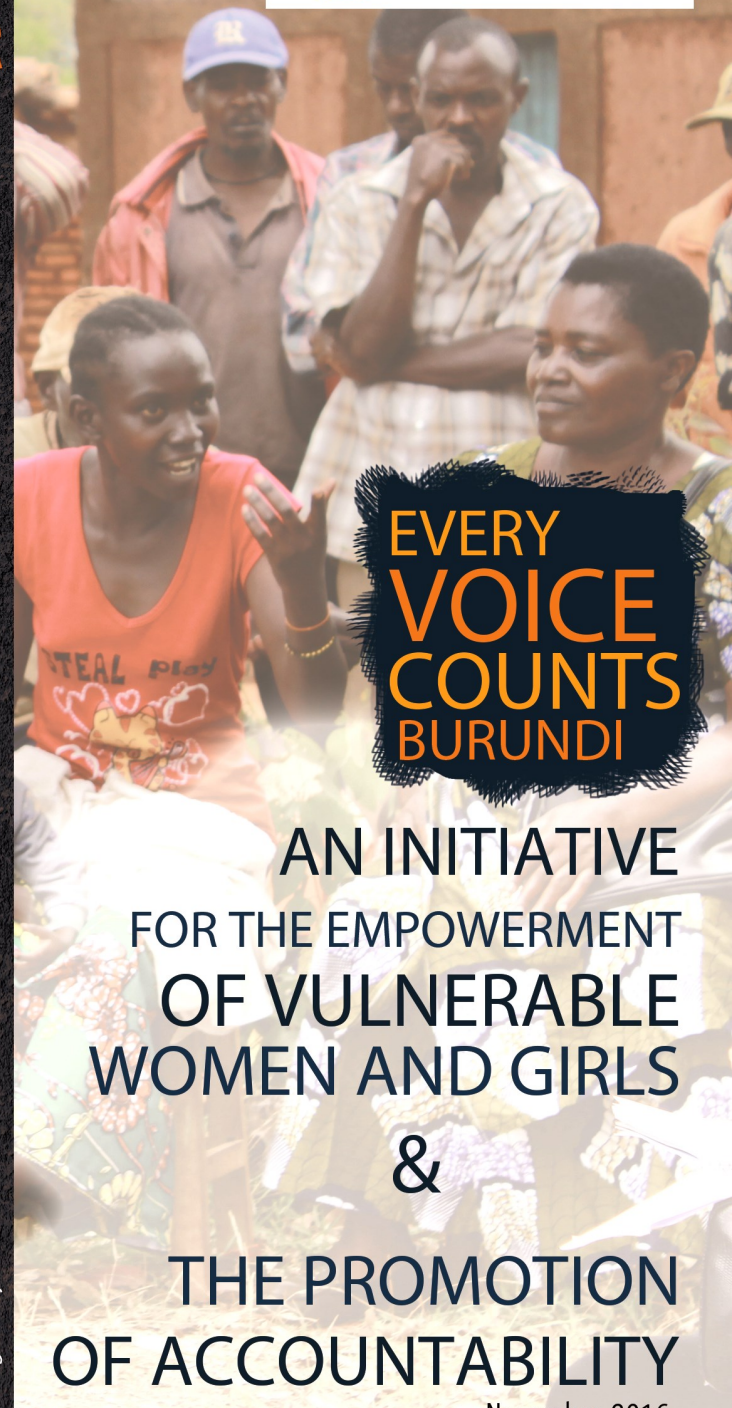
Our Donor



BUJUMBURA, 30, MWEZI GISABO,

P.O.BOX 6424

www.care.org/country/burundi



**EVERY
VOICE
COUNTS
BURUNDI**

**AN INITIATIVE
FOR THE EMPOWERMENT
OF VULNERABLE
WOMEN AND GIRLS**

&

**THE PROMOTION
OF ACCOUNTABILITY**

November 2016

Designed by Irénée NDUWAYEZU

STEPS

2016

Creation of savings and credit groups, information on the rights and duties of citizens and other relevant topics

2017

Connection of savings groups networks to civil society organizations

2018

Accountability mechanisms adopted by public authorities and private sector (community scorecard)

2020

Creation of permanent spaces for dialogue between the administration, service providers and civil society organizations to ensure inclusion and accountability

FINANCIAL STABILITY

EXPECTED RESULTS

SUSTAINABILITY

ACCOUNTABILITY

GENDER SENSITIVITY

INNOVATIONS

- Gender sensitive community plans
- Conduct an assessment of the impact of PCDC (Communal Community Development Plan) through the community score card
- Organise community members (women and girls) in structures of solidarity and savings group

1 26,500 vulnerable women and girls have the power to actively influence decisions that affect their lives

2 Civil society organizations and networks of women and girls actively influence policies and practices in favor of excluded groups and influence public authorities and other power holders.

3 Women and girls, civil society organizations, public authorities and the private sector interact effectively in formal and informal spaces for dialogue and negotiation.

4 National, provincial, communal public authorities and private sector are gender sensitive and address the needs and interests of vulnerable women and girls.



CHALLENGE

One of the challenges is to see the community score card adopted by public service institutions as an accountability tool to enhance inclusive governance